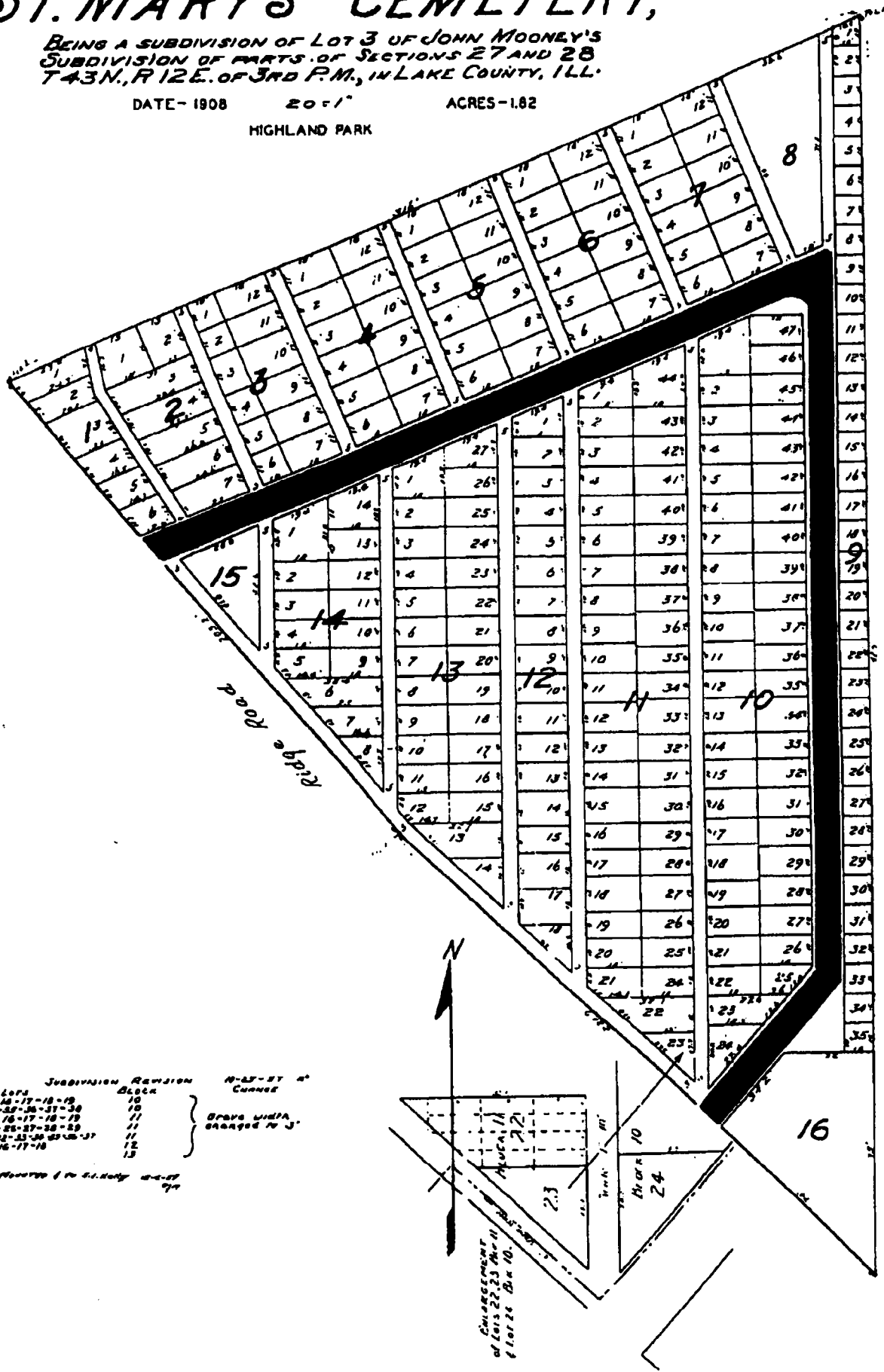


ST. MARY'S CEMETERY,

BEING A SUBDIVISION OF LOT 3 OF JOHN MOONEY'S
SUBDIVISION OF PARTS OF SECTIONS 27 AND 28
T43N., R12E. OF 3RD P.M., IN LAKE COUNTY, ILL.

DATE - 1908 20-1" ACRES - 1.82
HIGHLAND PARK



Subdivision	Revision	Block	N-ST-ST & CHANGE
12-13-14-15-16-17-18-19	10		Grave width changed to 3'
20-21-22-23-24-25-26-27-28	11		
29-30-31-32-33-34-35-36-37-38	12		
39-40-41-42-43-44-45-46-47-48	13		
49-50-51-52-53-54-55-56-57-58	14		
59-60-61-62-63-64-65-66-67-68	15		

City Records & Survey 10-4-07